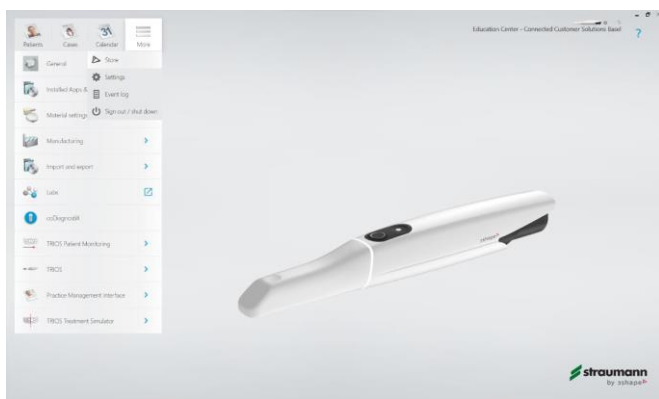


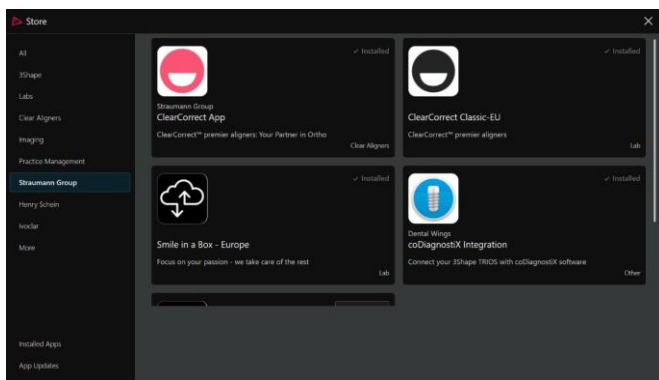
3Shape TRIOS® - Establishing connection with Straumann® Smile in a Box®

Connecting with Straumann Smile in a Box via your 3Shape TRIOS Scanner

- Click on “More” and select “Store.”



- In the search box, type ‘Smile in a box’. There are two different options, so always click the European option.



Note:

- Before you can send a case via your TRIOS scanner, Straumann Smile in a Box needs to approve your request.
- Once Straumann Smile in a Box approves your request, the connection will be added to your list of laboratories.
- Once you send your scans, submit your order on smileinabox.com and make sure to include your 3Shape Communicate® Order ID.