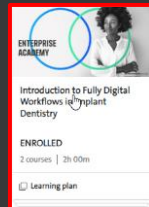


# SINGLE UNIT RD 360 WORKFLOW

## DIGITAL END-TO-END TREATMENT SOLUTION

### TREATMENT PLANNING

- Scans are sent to Smile in a Box™ : a collaborative implant planning service
- Treatment plan and surgical guide are designed and produced
- Implants, auxiliaries and temporary crown included as desired



## Restorative Dentistry 360

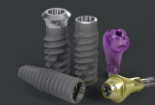
## Educational Resources

Click on links for more info



### SURGERY & REVIEW

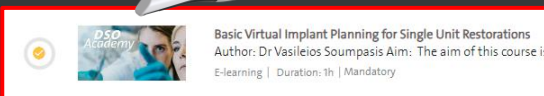
- Guided surgery delivered using customised Smile in a Box™
- Treatment plan according to implant type
- Guided surgical kit used
- Follow-up days after surgery
- Check temporary crown if selected



Guided Surgery Kit  
Instrumentation  
Article No 702526-en

### CONSULTATION & DATA ACQUISITION

- Implant treatment discussion
- Intraoral scans
- CBCT scans



### FINAL IMPRESSION & CROWN FIT

- Intraoral scans
- Scan body scans
- Fully digital crown designed and produced

