



Straumann® ImmediaXy™

The ecosystem for immediate treatment solutions

 **straumann**

# Taking immediacy to the next level

Patients' increasing demand for shorter treatment times, the growing evidence for predictable long-term success, and the positive effects on productivity and growth have made immediate treatment protocols a popular choice in implant dentistry.

Backed by its scientific approach and building on its legacy of innovation, Straumann® now takes immediacy to the next level of reliability and efficiency.

With ImmediaXy™, Straumann® offers an ecosystem of solutions that are designed to enable dental professionals to confidently and efficiently provide their patients with immediate temporisation – whenever possible and clinically sensible, whether in single tooth, multiple teeth or full-arch cases.<sup>1 - 3</sup>

## New growth opportunities in immediacy

Straumann® ImmediaXy™ e-book: 13 must-watch webinars and commented cases on immediacy.

Immediate treatments are more relevant than ever as patient expectations and business requirements are rising. In this prime collection of high-value webinars and commented clinical cases, experienced and pioneering clinicians share their knowledge and best practices to:

- Position immediacy as a strong practice differentiator
- Enlarge the scope of immediate treatments thanks to strong innovations
- Increase the practice productivity thanks to high-impact digital services and solutions



Download now  
[www.straumann-uk.co/immediaxy-ebook](http://www.straumann-uk.co/immediaxy-ebook)

# The ecosystem for immediate treatment solutions



## End-to-end

Straumann® ImmediaXy™ covers and seamlessly connects all stages of the workflow: Data Acquisition, Planning & Design, Surgery and Restoration.



## Confidence

ImmediaXy™ capitalises on Straumann®'s scientific approach, proven expertise and evidence-based solutions.



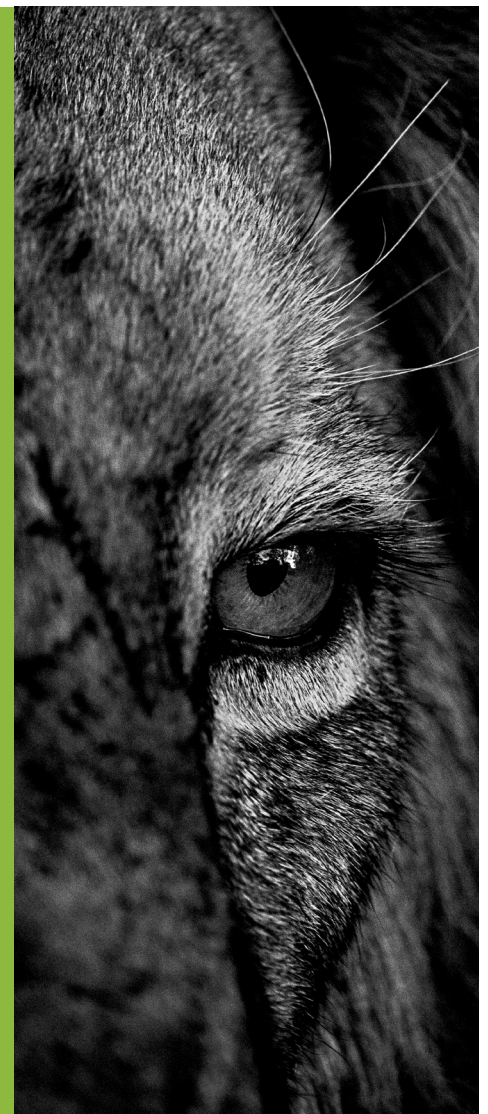
## Efficiency

Straumann® ImmediaXy™ puts operational simplicity and workflow optimisation at the core of its solutions, whether digital, surgical or restorative.



## Partnership

As a true partner, Straumann® offers service, training and practice growth initiatives in combination with excellent products and solutions.





Straumann® ImmediaXy™ covers all stages of an immediate treatment workflow: Data Acquisition, Planning & Design, Surgery and Restoration. It provides end-to-end solutions, which are designed to enable immediate treatments with predictable outcomes, even in challenging indications.<sup>1,3</sup>

ImmediaXy™ makes the benefits of digital dentistry accessible – either in-house or outsourced – and is compatible with third-party solutions. A modular system, that can be tailored to support your workflow.



Data Acquisition



Virtuo Vivo™



3Shape® Trios® 3

IN-HOUSE

OUTSOURCED

# End-to-end solutions – whatever your workflow.



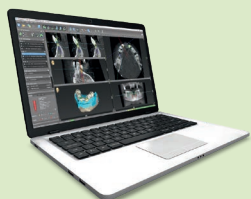
Planning & Design



Surgery



Restoration



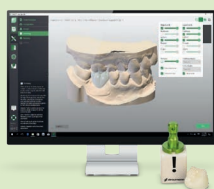
Surgical planning: coDiagnostiX®



Implant system: BLX



Milling machine: C series



Prosthetic design: CARES® Visual



Roxolid® – SLActive®



CARES® Materials



3D printer: P series



Biomaterials



Smile in a Box



# Data acquisition made easy

## Straumann® Virtuo Vivo™

- Scans dentate full arch in 2min or quadrant in under 45sec
- Compact handpiece: greater convenience and comfort
- Validates data quality in real time
- Powderless intraoral scanning in real colour



## 3Shape® Trios®

- Fast and easy to use to ensure patient comfort
- Accurate colour impressions incl. teeth shade measurements
- Available as wireless with long-lasting, rechargeable batteries
- Wide range of indications, restorative options and materials



# Efficient planning and design

## coDiagnostiX®

- Precise and easy planning for predictable results
- From simple to advanced cases
- Numerous functions, e.g. drill guide design, automatic nerve canal detection and distance monitoring



## DWOS® Synergy

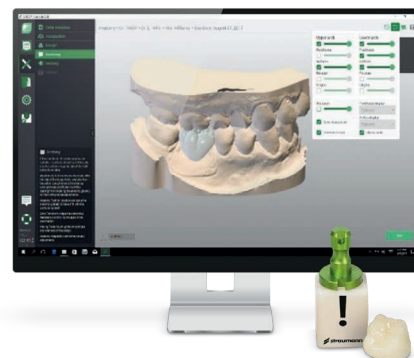
Efficient outcomes through collaborative planning

- Integrates surgical and prosthetic workflows through real-time case sharing between coDiagnostiX® and CARES® Visual
- This enables prosthetically-driven implant planning and immediate provisional design

## CARES® Visual

Open design software solution

- Compatible with intraoral scanners, impression scanners and milling machines
- Supports a wide range of applications
- Allows for input and output of STL for third-party systems



## CARES® P series

Fast in-house production of premium-quality dental products.

- Full control over the production process
- Adaptable to meet your individual needs
- Improves workflow efficiency and reduces turnaround time
- Complete solution from printing to post-processing with P Wash & P Cure

# Advanced surgical solutions

## Straumann® BLX

An implant system perfected for immediate treatments

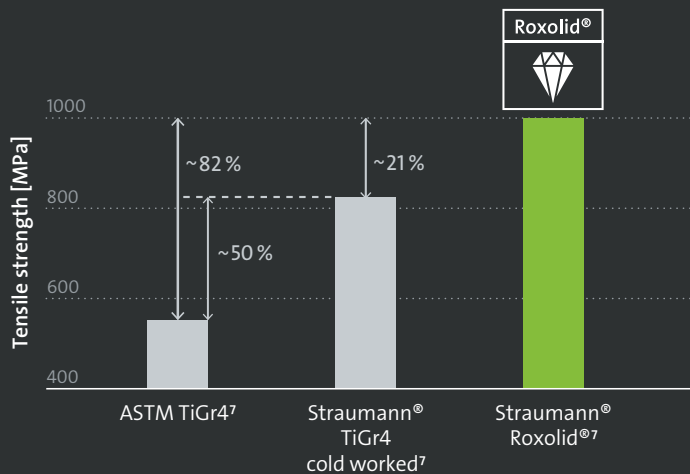
- Dynamic Bone Management: outstanding design concept developed for immediate protocols in all bone types
- Aesthetic Ease Concept: simple yet versatile portfolio with one connection for all diameters and under-contoured prosthetics for excellent soft-tissue management
- Full digital integration for an optimized workflow



## Roxolid®

Setting new standards. Reducing invasiveness<sup>6</sup>

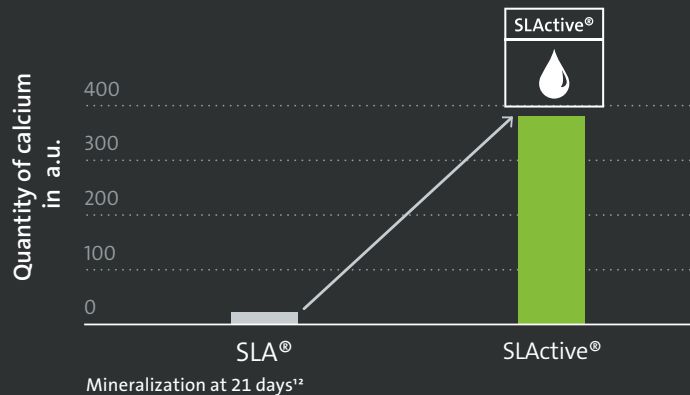
- High-performance alloy of 85 % titanium and 15% zirconium
- Higher tensile<sup>7</sup> and fatigue strength<sup>8</sup> than comparable titanium implants
- Designed to treat challenging anatomical situations in narrow interdental spaces



## SLActive®

For high predictability and accelerated osseointegration

- Hydrophilic surface treatment
- Reduces healing time from 6–8 weeks to 3–4 weeks<sup>10</sup>
- Ultra-fine topography and increased surface area
- Implant survival rate in immediate loading after 10 years: 98.2%<sup>11</sup>



## Straumann® Biomaterials

Advanced solutions for immediate treatment protocols:

- Straumann® Xenograft®: natural, bovine bone substitute for extended stability
- Jason® membrane: thin and tear-resistant with a long barrier function, derived from native collagen from porcine pericardium
- Mucoderm®: stable, easy-to-handle collagen matrix derived from porcine dermis for soft-tissue augmentation; reduces morbidity and increases patient comfort compared to autogenous grafts
- Maxgraft®: allogenic bone graft with outstanding natural regenerative potential

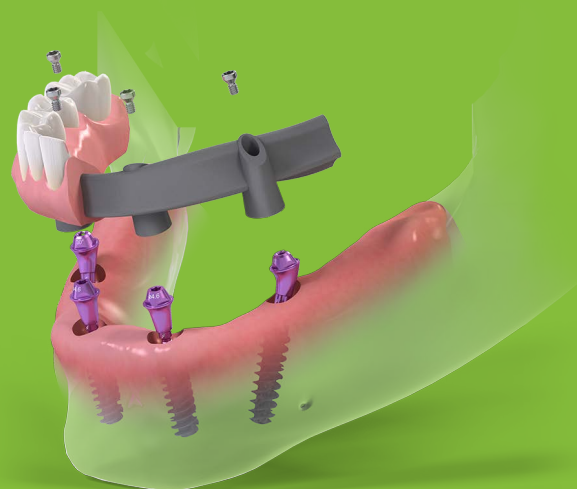


## NEW CONFIDENCE, FLEXIBILITY AND EFFICIENCY WITH ONE SYSTEM

### Straumann® Pro Arch with BLX

One system for most challenges of the immediate full-arch rehabilitation.

- Round and slim angulated abutments to maximise space for soft tissue
- 3.75mm diameter BLX implant for bone preserving protocols applicable in all indications
- Broad range of implant with a single connection
- Roxolid® and SLActive® technology for real confidence
- Implant design optimised for primary stability



## High restorative versatility.

### CARES® C series

Precision meets power

- Robust and compact, 4-axis, wet milling and grinding equipment for in-house processing
- Wide variety of indications, restorative options and materials
- Highly efficient processing of hybrid materials with maximum precision

### CARES® Materials

A leading offering

- A wide range of dental materials and treatment options that covers all indications and workflows
- Guaranteed high quality to ensure a predictable prosthetic outcome





## THE BENEFITS OF DIGITAL DENTISTRY JUST A FEW CLICKS AWAY

### Smile in a Box – Create your own mix

Our digital, modular, integrated treatment planning and manufacturing service to cover your surgical and prosthetic indications. You select the services you require, and we deliver everything you need for your treatment in one box. Your modular alternative to in-house production.



## BE THERE FOR YOUR PATIENTS EVEN WHEN YOU CAN'T BE THERE WITH THEM

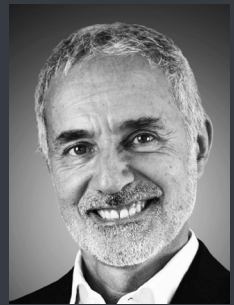
### DenToGo™ – Virtual assessment and remote treatment monitoring

DenToGo™ enables you to keep a closer eye on your patients' progress, helping to improve patient compliance while allowing you to schedule appointments more efficiently. Patients are reviewed more often, but without the need for them to visit the practice, freeing up your chair time in order to treat more patients and reducing practice costs, such as PPEs. Scan the QR code below or go to [www.straumanngroup-uk.co/dentogo-ebook](http://www.straumanngroup-uk.co/dentogo-ebook) and download the e-book "Virtual Dentistry | The present and the future".



# ImmediaXy™ in practice.

Replacement of a deciduous canine with immediate, computer-guided implant placement and immediate prosthesis.



Dr Sergio Piano  
DDS, Genoa, Italy

31 year-old female  
Complex anatomy due to  
impacted tooth 23

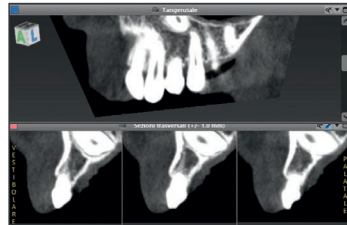
Deciduous tooth 23 still in place and mobile  
Patient's wish for short treatment and  
high aesthetics at all times

Acknowledgements: Alessandro Giacometti, dental technician (Genova, Italy) and Dr Luca Repetto, DDS (Genova, Italy)

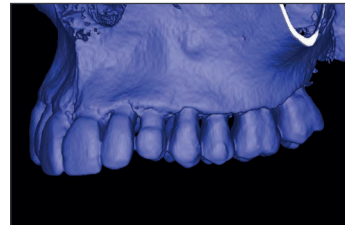
## DATA ACQUISITION



Initial situation with deciduous tooth 23



The CBCT exam shows the impacted canine and limited space available

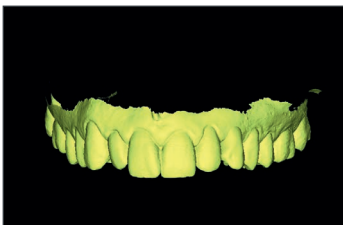


Assessment of bone availability with CBCT

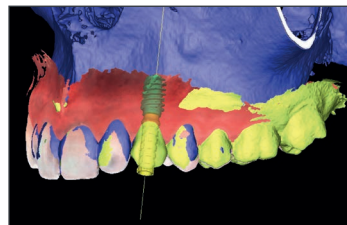


Optical impression with Virtuo Vivo™

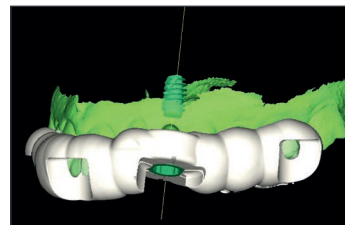
## PLANNING & DESIGN



Digital wax-up of tooth 23



Superimposition of the files in coDiagnostiX® to plan the implant and temporary abutment



Design of surgical guide based on correct sleeve alignment

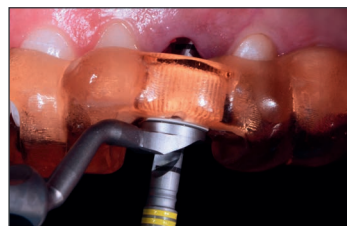


The guide is printed and the sleeve is glued into place

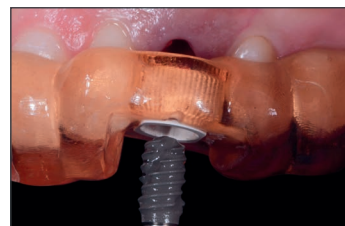
## SURGERY



Simple extraction due to root resorption



Fully-guided drilling with VeloDrill™ system



Guided placement of a BLX implant  
(4.5 mm x 8 mm)



Occlusal view after implant placement

## RESTORATION



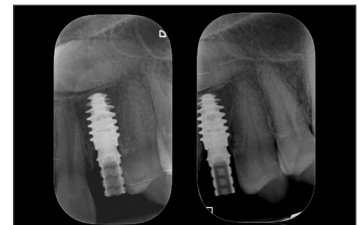
Provisional crown fitted on resin model



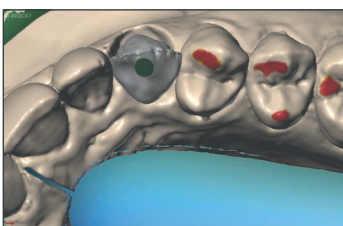
The provisional crown is accurately placed on the abutment with a mask



Provisional crown in place, out of occlusion



The post-operative X-ray confirms the precise placement



Design of final crown in DWOS® CAD/CAM



Final, screw-retained zirconia crown on Variobase®



Aesthetic integration of the final crown



The patient's smile at the end of the treatment

# Replacement of two maxillary second premolars with immediate implant placements and immediate prostheses.

45 year-old male  
Fractured teeth 15 and 25

Healthy situation  
Good bone availability

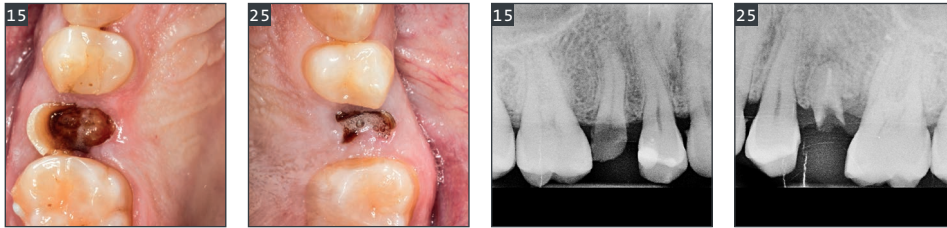
Thick buccal bone plate



Dr Juan Blanco  
MD, DDS, MSc, PhD,  
Santiago de Compostela  
Spain

Co-authors: Dr Iria Darriba, DDS, MSc (Santiago de Compostela, Spain) and Javier Pérez, dental technician (Lugo, Spain)

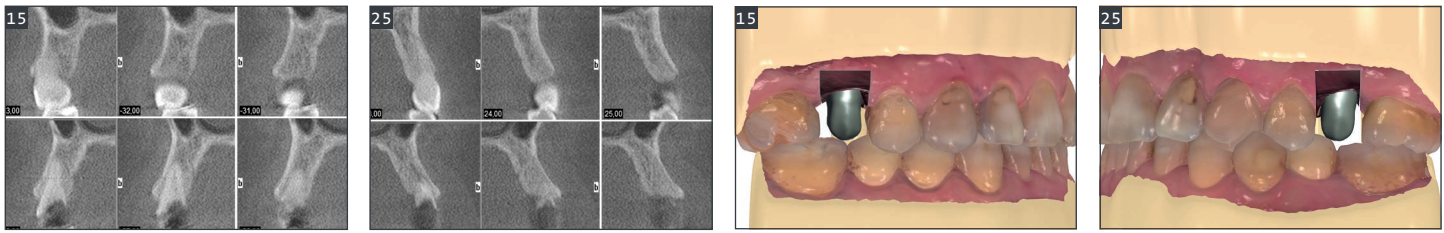
## DATA ACQUISITION



Initial situation

X-ray examination

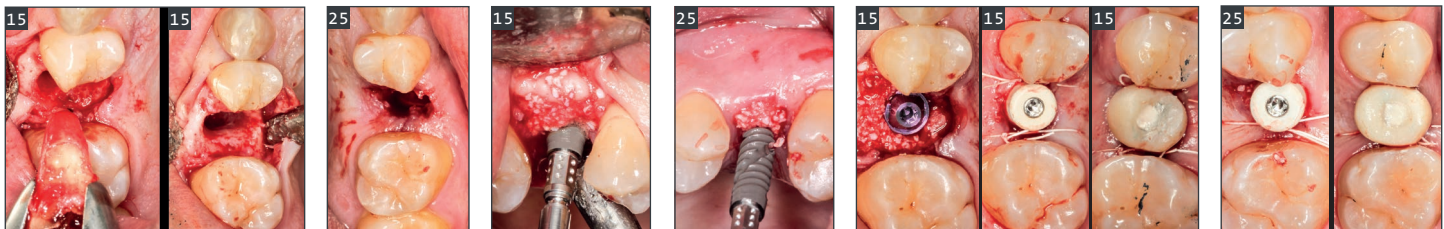
## PLANNING & DESIGN



The CBCT analysis shows the favourable bone situation and alignment between roots and alveolar crests

Design of both provisional crowns with 3Shape Dental System®

## SURGERY

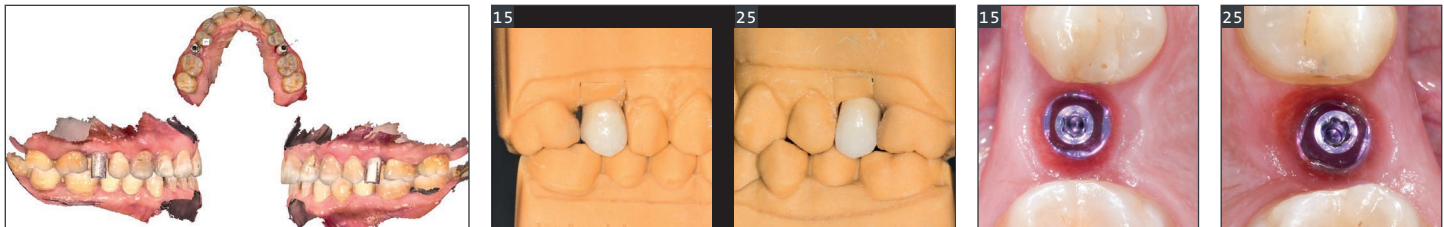


Atraumatic extractions of both teeth: with a flap for tooth 15 and flapless for tooth 25

Insertion of BLX implants (3.75 mm 12 mm) and gap filling with Straumann® XenoGraft

Placement of two 2.5 mm-high, screw-retained abutments, healing caps and provisional crowns.

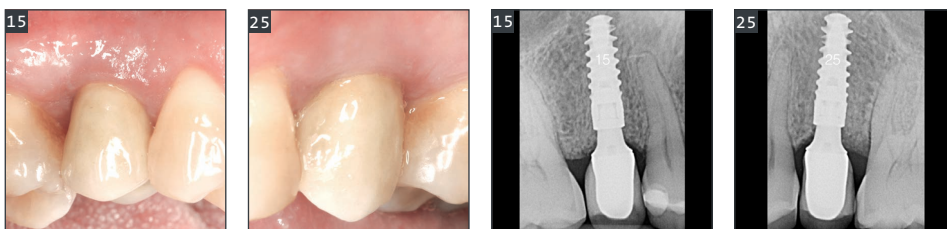
## RESTORATION



Digital impression to prepare the final restorations

Try-in of the final crowns

Emergence profiles prior to crown fitting



Final crowns and good gingival contouring after 6 months

X-ray after 6 months

# Straumann® ImmediaXy™

## The ecosystem for immediate treatment solutions

Give your practice the BOOST it needs with our exclusive ImmediaXy® business opportunities! Register in the link (QR Code) below to find out how Straumann® can help cover the end-to-end implant workflow.



#### REFERENCES

1 Eckert SE, Hueler G, Sandler N, Elkattah R, McNeil DC. Immediately Loaded Fixed Full-Arch Implant-Retained Prosthesis: Clinical Analysis When Using a Moderate Insertion Torque. *Int J Oral Maxillofac Implants*. 2019 May/June;34(3):737-744. 2 Piano S, Romeo E, Sbricoli L, Pisoni G, Cea N, Lops D. Simplified procedure for the immediate loading of a complete fixed prosthesis supported by four implants in the maxillary jaw: a 2-year prospective study. *Clin. Oral Impl. Res.* 2016 Dec;27(12):e154-e160. 3 French D, Larjava H, Ofec R. Retrospective cohort study of 4591 Straumann implants in private practice setting, with up to 10-year follow-up. Part 1: multivariate survival analysis. *Clin. Oral Impl. Res.* 2015 Nov;26(11):1345-1354. 4 Chiapasco M, Casentini P, Zaniboni M, Corsi E, Anello T. Titanium-zirconium alloy narrow-diameter implants (Straumann Roxolid®) for the rehabilitation of horizontally deficient edentulous ridges: prospective study on 18 consecutive patients. *Clin Oral Implants Res.* 2012 Oct;23(10):1136-41. 5 Quirynen M, Al-Nawas B, Meijer HJA, Razavi A, Reichert TE, Schimmel M, Storelli S, Romeo E. Small-diameter titanium Grade IV & titanium-13zirconium implants in edentulous mandibles: 3-year results from a double-blind, randomized controlled trial. *Clin Oral Implants Res.* 2015 Jul;26(7):831-40. 6 When guided bone regeneration can be avoided 7 Data on file 8 Medvedev A, Molotnikov A, Lapovok R, Zeller R, Berner S, Habersetzer P, Dalla Torre S. Microstructure and mechanical properties of Ti-15Zr alloy used as dental implant material. *J Mech Behav Biomed Mater.* 2016 Sep; 62:384-398. 9 Norm ASTM F67 (states min. tensile strength of annealed titanium); data on file for Straumann cold-worked titanium and Roxolid® implants. 10 Compared to SLA® 11 Nicolau P, Guerra F, Reis R, Krafft T, Benz K, Jackowski J. 10-year outcomes with immediate and early loaded implants with a chemically modified SLA surface. *Quintessence Int.* 2019 Jan 25;50(2):114-124. 12 Katharina Maniura. Laboratory for Materials – Biology Interactions Empa, St. Gallen, Switzerland. Protein and blood adsorption on Ti and TiZr implants as a model for osseointegration. EAO 22nd Annual Scientific Meeting, October 17–19 2013, Dublin.

Straumann Group UK  
3 Pegasus Place  
Gatwick Road,  
Crawley RH10 9AY  
T +44 (0)1293 651 230 (Switchboard)  
[www.straumann.co.uk](http://www.straumann.co.uk)

Virtuo Vivo™, DWOS® and coDiagnostiX® are trademarks or registered trademarks of Dental Wings Inc., Montreal, Canada. VeloDrill™, CARES®, Variobase®, Roxolid®, SLA® and SLActive® are trademarks or registered trademarks of Institut Straumann AG, Basel, Switzerland. 3Shape® and Trios® are registered trademarks of 3Shape A/S, Copenhagen, Denmark.

© Institut Straumann AG, 2020. All rights reserved.  
Straumann® and/or other trademarks and logos from Straumann® mentioned herein are the trademarks or registered trademarks of Straumann Holding AG and/or its affiliates.

