



A NEW MINDSET

NEODENT®
CERAMIC IMPLANT SYSTEM



Ceramic
Implant System



ZiLock®
Connection



Ceramic Implant System

Increasing expectations for treatments solutions, the Neodent® Ceramic Implant System combines the notions of esthetic, stability, and flexibility. This solution allows to immediately treat patients, thanks to the moderns naturally tapered design and wide prosthetic portfolio, achieving high-end esthetic results.





A new **mindset**



A new flexibility mindset



A new stability mindset



A new esthetic mindset



A new **flexibility mindset**

Looking to attend several treatments solutions and a wide range of prosthetic possibilities through a 2-pieces connection.





TREATMENT FLEXIBILITY

A new concept in flexibility offering several solutions for treatment, from conventional to digital workflow, attending bone types I to IV with outstanding esthetics.

PROSTHETIC FLEXIBILITY

The 2-pieces connection benefits the customer allowing to choose the best prosthetic solution. A user-friendly system that provides higher treatment flexibility when compared to one-piece implants.



Zi Base



Single-unit screw-retained prosthesis



Single-unit cement-retained prosthesis



Ø 3.75/4.5 mm



Zi Base for c



Single-unit screw-retained prosthesis



Single-unit cement-retained prosthesis



Ø 4.65 mm



Zi CR Abutment



Single-unit cement-retained prosthesis



Ø 4.0/4.5 mm

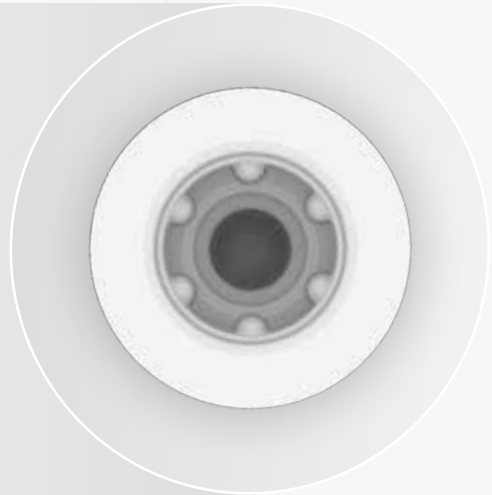


A new stability mindset

Zi combines a naturally tapered implant design with double trapezoidal threads. Both designed to maximize stability and predictability in immediate treatments.

ZILOCK® CONNECTION

ZiLock® is a ceramic internal connection with 6 rounded lobes. This indexation results in a precise abutment positioning, protecting against rotation. Designed with a longer screw which provides a secure engagement between the ceramic implant and the ceramic abutment. Additionally, it improves the ceramic performance by optimizing the force distribution along the internal connection.

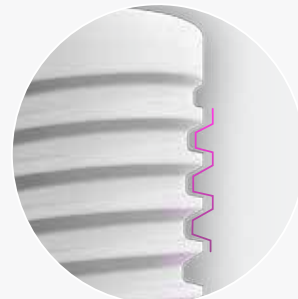


TAPERED DESIGN FOR PRIMARY STABILITY

Ceramic Implant System exhibits a modern tapered geometry designed for predictable immediate load in bone types I to IV. This feature was designed to mimic the tapered shape of a natural tooth root, driving to achieve high primary stability.



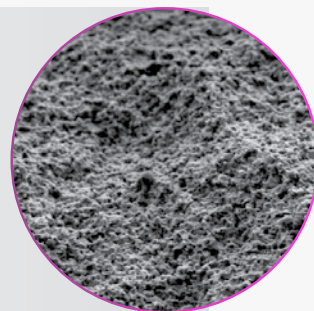
Apically tapered with chamber flutes.



Double trapezoidal thread design.

PREDICTABILITY WITH A SAND-BLASTED AND ACID-ETCHED SURFACE

Zi features the blasted and acid-etched surface treatment, presenting macro and micro roughness based on the successful Neoporos® treatment surface.



Representative image of the implant surface - Scanning Electron Microscope (SEM) magnification of 5000x.



A new **esthetic mindset**

Seeking for an outstanding esthetic performance, Zi offers, from the material itself, Ceramic, to the comprehensive portfolio, a natural esthetic result.

OUTSTANDING ESTHETIC PERFORMANCE

Aiming to deliver performance with a high-end esthetic result, Neodent Ceramic Implant System features an outstanding ceramic material, that provides a **natural looking outcome**, thanks to its white color

A PORTFOLIO TO ACHIEVE NATURAL ESTHETIC RESULTS

Ceramic prosthetic portfolio allows conventional or immediate protocol. In addition, preferable workflow can be applied from **conventional to digital**, providing a natural looking restoration.



Healing Abutment

Designed in Ceramic with a consistent emergence profile matching the outer shape of the Zi Base.



Conventional Workflow

The burn-out coping is developed to deliver accurate wax up prosthetic restoration in a conventional workflow.



Digital Workflow

The Scanbody allows access to the digital restorative workflow for implant level. This solution is compatible with the main CAD softwares in the market.



New smiles every day

Founded by a dentist to dentists, with the purpose of changing lives of more patients. Neodent® is a global brand available in more than 80 countries, with more than 3 millions implants sold annually. With a legacy of more than 30 years focused on ease of use, Neodent® Dental Implant Systems focus on progressive treatment concepts, such as immediacy with modern and reliable solutions to enable therapy access and affordability for creating new smiles every day.

Team work to achieve bigger results



Combining Neodent® strengths in dentistry with our philosophy of immediacy and Brazilian innovation we join forces with German technology leadership and also rely on the precision of Swiss engineering, to deliver a straightforward ceramic implant system for dentists and for patients.

SMILE THROUGH LIFE



A Straumann Group Brand

Neodent® is a global brand founded by a dentist for dentists, with the purpose of changing lives. Available in 95 countries, with a legacy of more than 30 years focused on ease of use, Neodent® Dental Implant Systems focus on progressive treatment concepts, such as immediacy with modern and reliable solutions to enable therapy access and affordability for creating new smiles every day.



GLOBAL BRAND

Available in 95 countries, expanding our philosophy worldwide.



FOUNDED BY A DENTIST FOR DENTISTS

A legacy of more than 30 years focused on ease of use.



PROGRESSIVE TREATMENT CONCEPTS

Modern and reliable solutions.



THERAPY ACCESS AND AFFORDABILITY

Accessibility to proven and affordable solutions.

毎日、とびっきりの笑顔を

NUOVI SORRISI OGNI GIORNO

CHAQUE JOUR DE NOUVEAUX SOURIRES

новые улыбки каждый день

JEDEN TAG EIN NEUES LÄCHELN

NUEVAS SONRISAS TODOS LOS DÍAS

NYA LEENDEN VARJE DAG

NEW SMILES EVERY DAY

NOVOS SORRISOS TODOS OS DIAS

CHAQUE JOUR DE NOUVEAUX SOURIRES

NOVOS SORRISOS TODOS OS DIAS

© 2024 – JJGC Indústria e Comércio de Materiais Dentários S.A. All rights reserved. All brands listed in this material, registered or not, are the property of JJGC Indústria e Comércio de Materiais Dentários S.A. The reproduction of this material without prior authorization is prohibited. Some items may not be available for sale yet. For further informations, please contact your local distributor.

Neodent®, Zi™, ZiLock®, NeoPoros® are trademarks or registered trademarks of JJGC Indústria e Comércio de Materiais Dentários S.A. Maxon is a trademark or registered trademark of maxon dental GmbH. CARES is a trademark or registered trademark of Straumann Holding AG. 3Shape is a trademark or registered trademark of 3Shape A/S. exocad is a trademark or registered trademark of exocad GmbH. Dental Wings is a trademark or registered trademark of Dental Wings Inc.

NEO117_neodent_zi_brochure_en_eU_F00_of_080224

www.neodent.com

 **NEODENT.**
A Straumann Group Brand

