



DWOS Chairside - What's new

[Anatomy - advanced positioning](#)

[Zone transform - new tools](#)

[Waxing - increased accuracy](#)

[Display options](#)

DWOS Chairside 2020 - What's new

Anatomy position




We have redesigned the anatomy positioning tools to provide a smoother and more accurate performance, adapted for all levels of expertise.

You can use tools to obtain a ballpark placement of the anatomy using move / scale / rotate, or go even further and fine-tune the position as you seen fit. We have remodeled the shape and size of the placement handles for improved grasp and enhanced flexibility when lining up the anatomy.

Ballpark placement

You can place the anatomy in an approximate position using a combination of clicks and hotkeys.

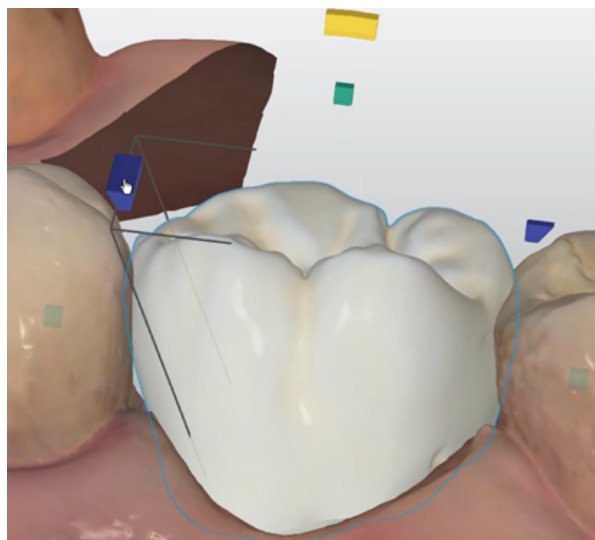
For the initial rough placement of the anatomy, you can use one of the following options:

Pointer	User action	Anatomy placement
	Left-click & hold	Move
	Left-click & SHIFT	Scale up / down
	Left-click & CTRL	Rotate

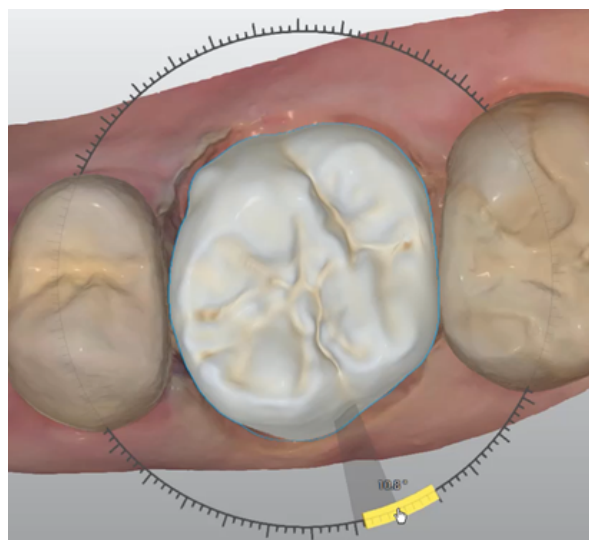
DWOS Chairside 2020 - What's new

Fine-tune placement

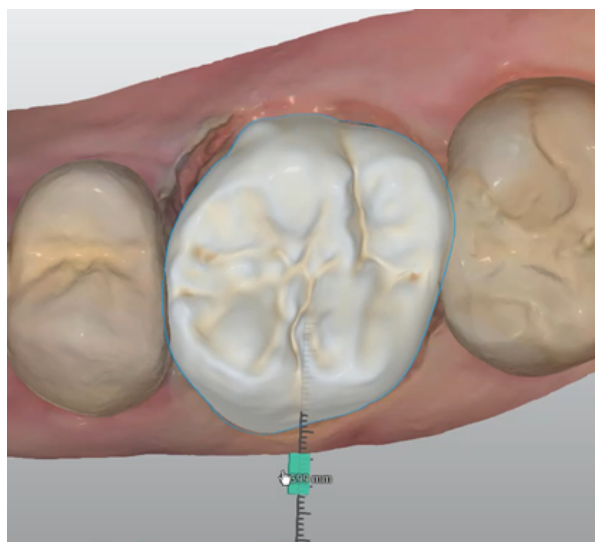
The ergonomic handles are easy to grasp and simple to use. If you add hotkeys, you are provided with an array of tools to account for all requirements. For instance, if you press CTRL while using one of the deformation handles, you can apply a symmetrical transformation.



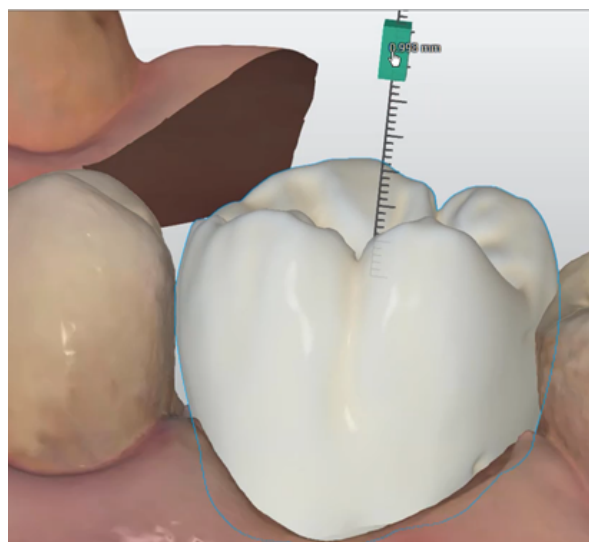
Purple handles adjust interidental spacing by modifying the anatomy wall while rotating the item on the margin line.



Yellow handles rotate item vertically or horizontally.



Green handles adjust the size of the unit horizontally or vertically.



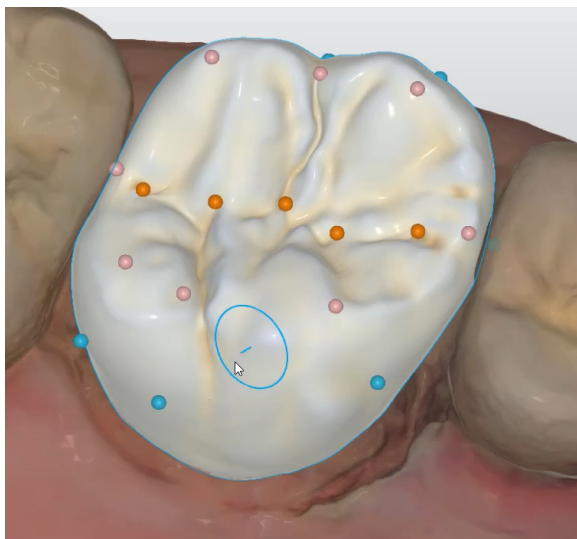
Green handles adjust the size of the unit horizontally or vertically.

DWOS Chairside 2020 - What's new

Zone transform

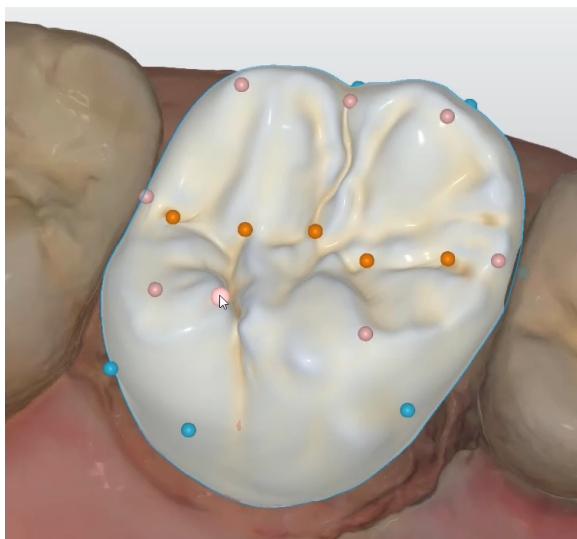
The new **Zone Transform** morphing tools are clear and easy to use for sculpting, filling, or smoothing out the surface of the anatomy. You can use handles to model the surfaces they cover, or the free transform tool to sculpt any surface you choose.

Zone transform tools



The **blue circle** shows the coverage of the free tool.

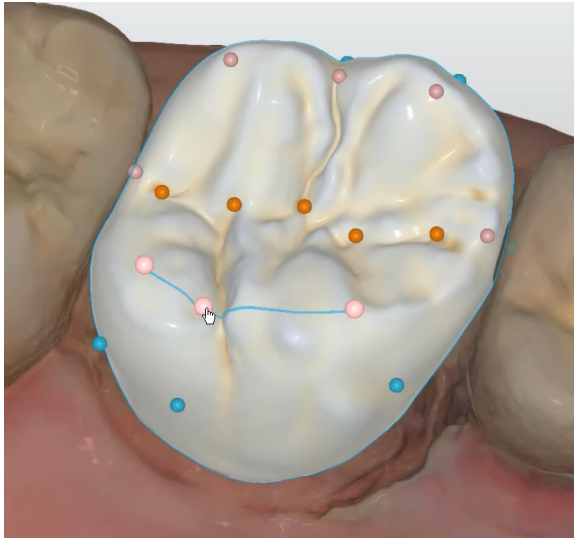
The **blue line** represents the axis of the deformation



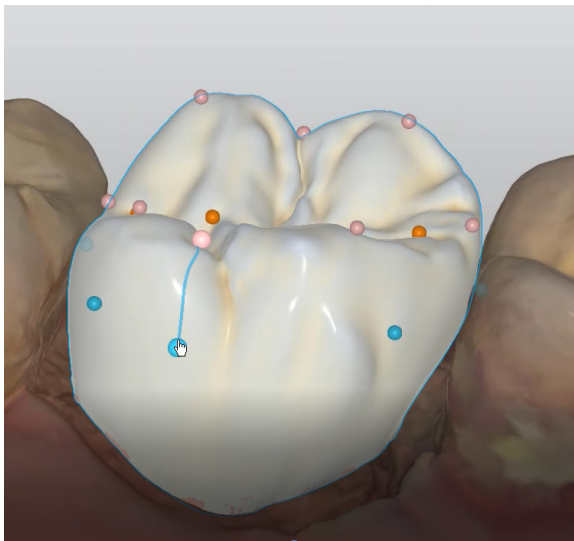
Click any handle to sculpt the surface underneath.

Press ALT to move the selected handle to a different place on the surface.

DWOS Chairside 2020 - What's new



Press SHIFT to sculpt the surface located under same-color handles color located on the same side.

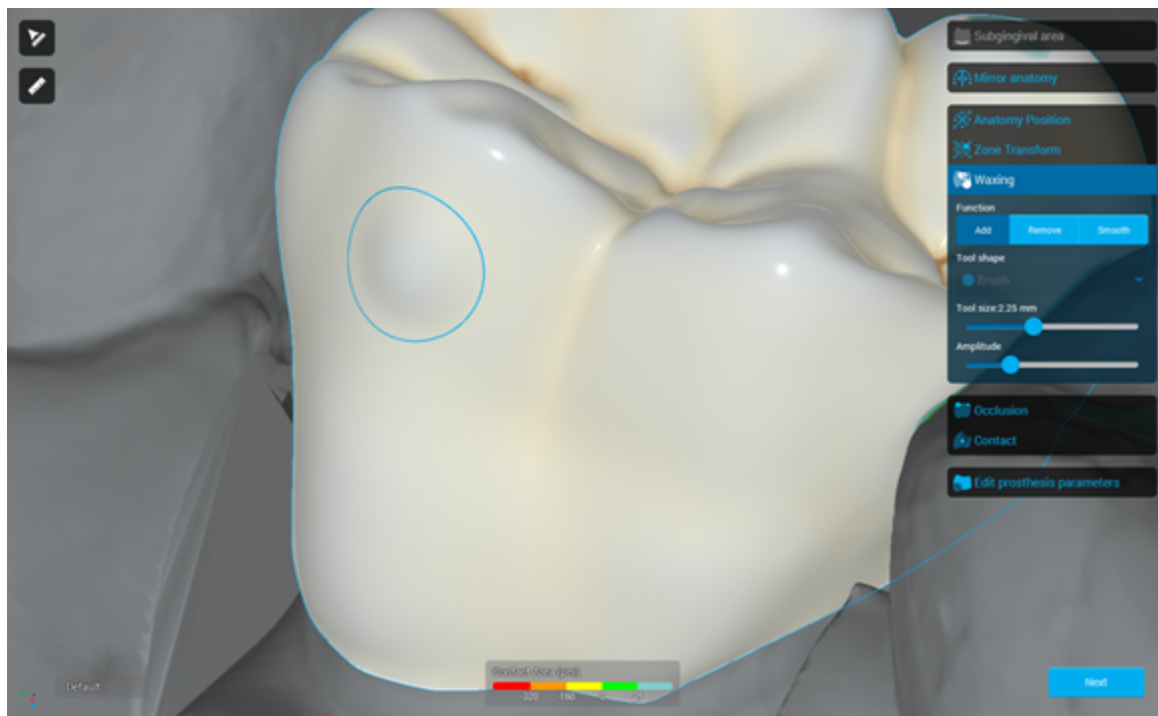


Press CTRL to sculpt the occlusal cervical surface located under handles of different colors.

DWOS Chairside 2020 - What's new

Waxing

We have revamped the waxing tools performance by greatly reducing the number of mouse movements required to apply waxing and increasing precision of the mouse clicks. This overhaul boosts responsiveness and accuracy of the end results.



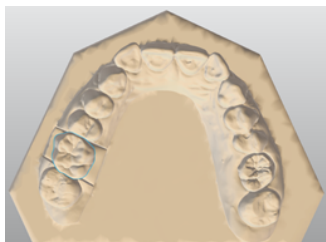
DWOS Chairside 2020 - What's new

Display options

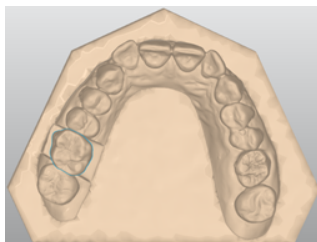
We have implemented new display options for arches, restoration, and model. You can now display the restoration in a different color for presentation or validation purposes.

Arch display options

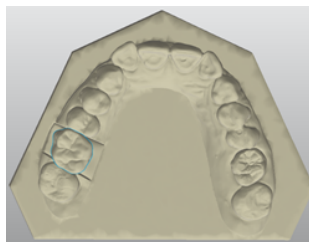
simplified



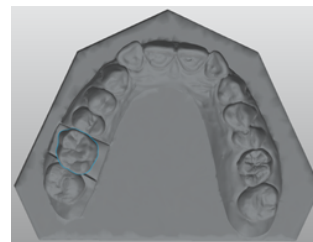
standard



plaster

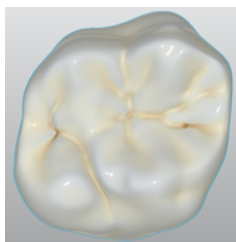


clay

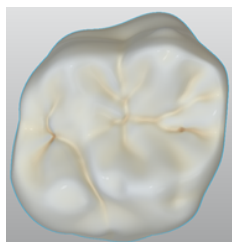


Anatomy display options

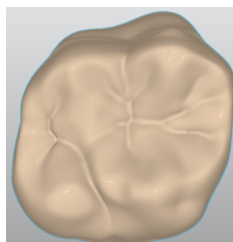
textured



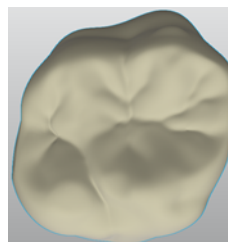
organic



same as arch



same as arch



same as arch

