

healfit[®]SH



Digital
frontrunner.

ANTHOGYR 
A Straumann Group Brand

healfit[®] SH

Healfit[®] SH is an anatomical healing solution with a biomimetic design, scannable and seamlessly integrated into the digital workflow.

Designed for naturally harmonious implant restorations while preserving the osteomucosal environment, Healfit[®] SH is a valuable ally in immediate protocols.



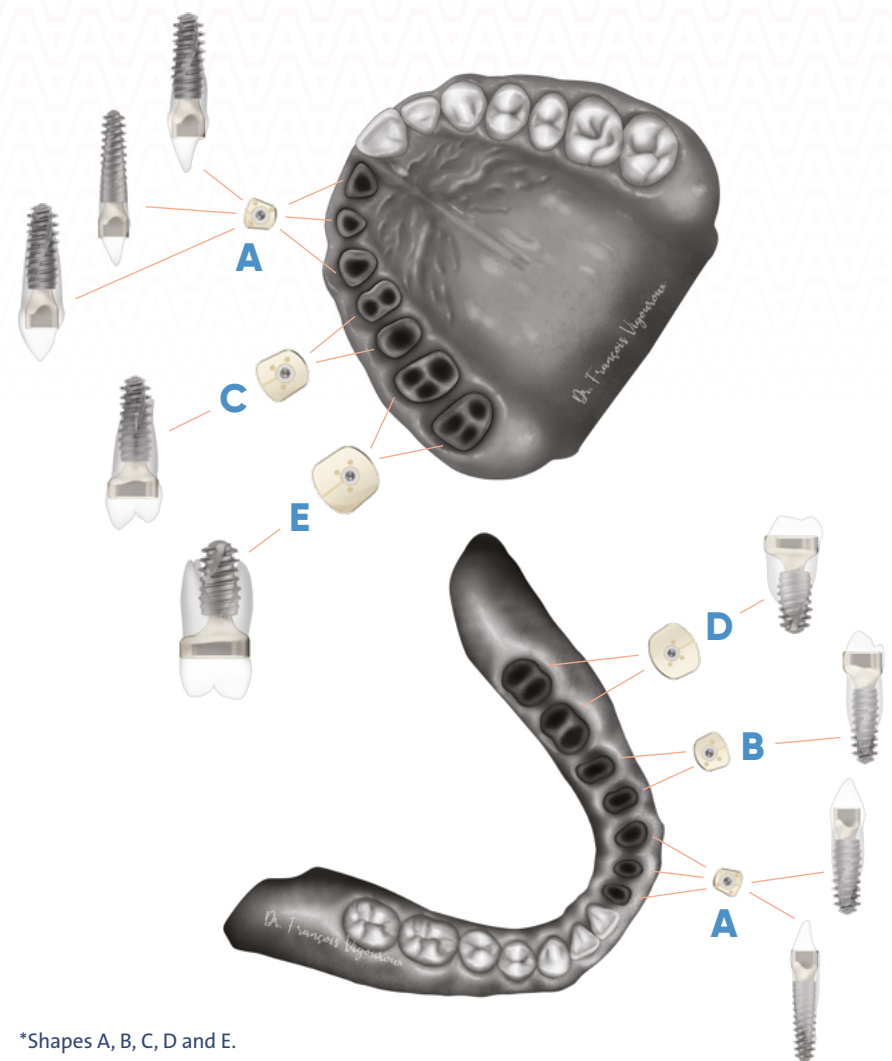
Prosthetic-guided
tissue **preservation.**

healfit[®] SH

BIOMIMETIC DESIGN.

- 5 unique shapes*, inspired from the study of hundreds of dental profiles, ensuring an anatomical fit across all sectors.

- For single-unit restorations on Axiom[®] BL and TL implants, available in multiple gingival and coronal heights.



*Shapes A, B, C, D and E.

Prosthetic-guided tissue preservation.



3 in 1

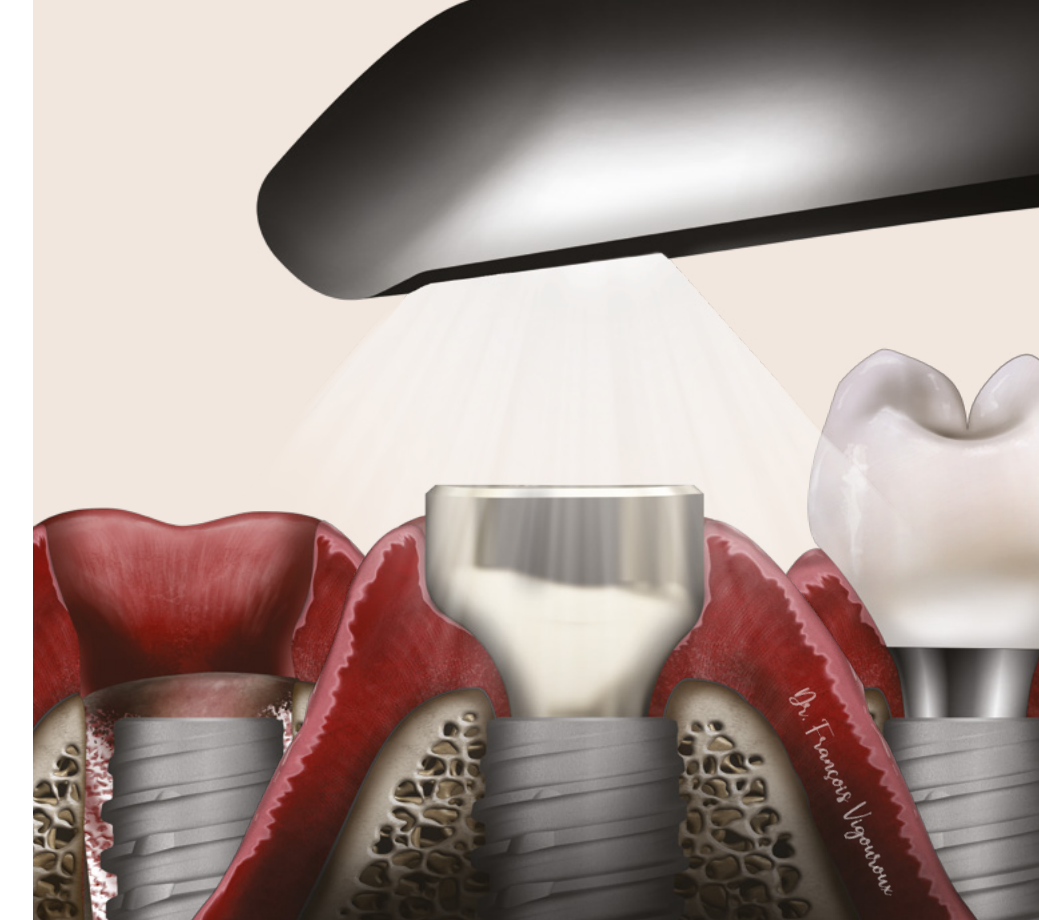
DIGITAL EFFICIENCY.

Streamlined workflows

- 3 in 1 functionality: healing, tissue preparation, and impression-taking.
- Final restoration design closely aligned with the original anatomical profile, optimizing prosthetic conception and placement.
- Fewer components and manipulations, reducing chairside time.



DOWNLOAD LIBRARIES.



HEAL.

- Maintains alveolar and mucosal volume in immediate extraction-implantation protocols.

SHAPE.

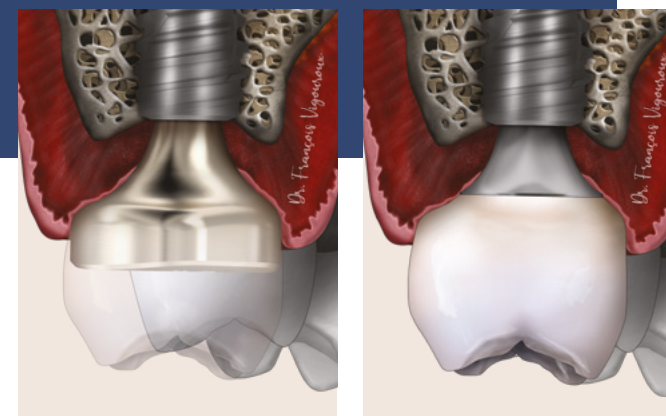
- Helps recreate volume in healed sites with its anatomical shape and natural healing dynamics.

TAKE THE IMPRESSION.

- Enables direct, digital or conventional impression-taking without disconnecting the component, preserving the biological seal.

Continuity in prosthetic workflow

- Constant emergence profile, compatible with X-Base[®] Ti-bases.



ESTHETIC AND FUNCTIONAL BENEFITS FOR PATIENTS.

- Discreet in-mouth appearance thanks to its natural-colored coating.
- Gingival contour preparation, as close as possible to the initial environment, for optimal prosthetic integration.
- Supports soft tissue preservation, contributing to reduce the need for invasive procedures or complex tissue grafts.

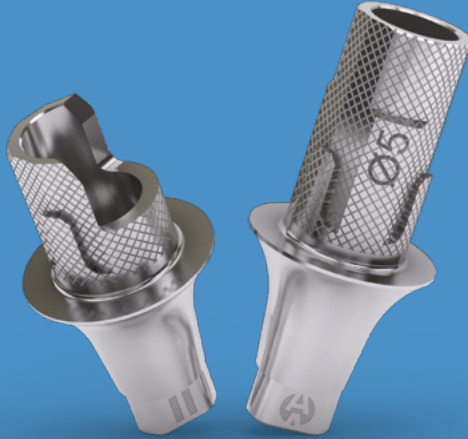
ANTHOGYR 
A Straumann Group Brand

PROSTHETIC WORKFLOW EFFICIENCY.



DISCOVER
X-BASE®

NEW!
x.base®

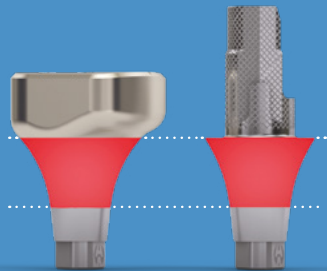


A synergy for predictable prosthetics: Healfit® SH and X-Base®

- Recovery of the gingival emergence profile for prosthetic design closely aligned with the original environment.
- Matching emergence profiles between Healfit® SH and X-Base®.
- Facilitated prosthetic placement.



DOWNLOAD
LIBRARIES.



FOLLOW US.



www.anthogyr.com

ANTHOGYR

A Straumann Group Brand

